

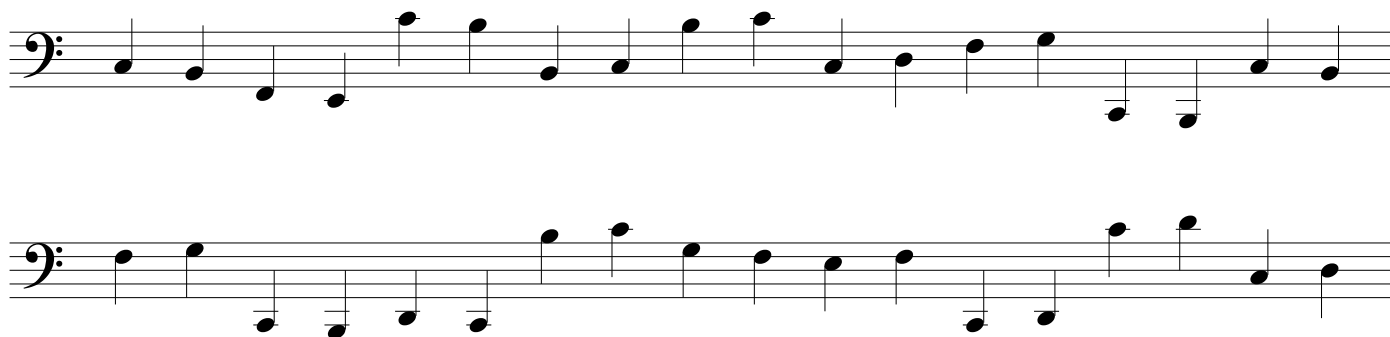
Performance Quiz #2, Friday Sept 25

Once again we'll do 10-minute one-on-one appointments to test how you are doing with our "cleffing," rhythms and singing/playing. Once again I'll make a recording of the session and post it for you later. If you object to this procedure you could opt out of it.

During the quiz I'll provide a "clean" copy of this sheet for you to read off of.

A. Bass Clef

Let's pick two lines from Bass Clef Level Three, saying the letter names out loud in a steady rhythm. Doesn't have to be super fast, best performance is just calm and accurate.



C. Melody

Pick ONE tune from the list below. There are three different options, which are easiest, medium and hard! All of them are in a minor key. You may sit at the piano, play the melody, and sing along OR you can do it *a cappella*. For full credit I would like it in the solfege language (*do re me* etc.) but I will take some alternate method for 92 points. If the tune does not fit your vocal range you should plan to move it to a new key - this is actually easier when performing *a cappella* but requires planning at the piano. You can bring in your own sheet music for this as long as it doesn't have the solfege syllables written in.

