

# First Performance Quiz, Friday Sept 13

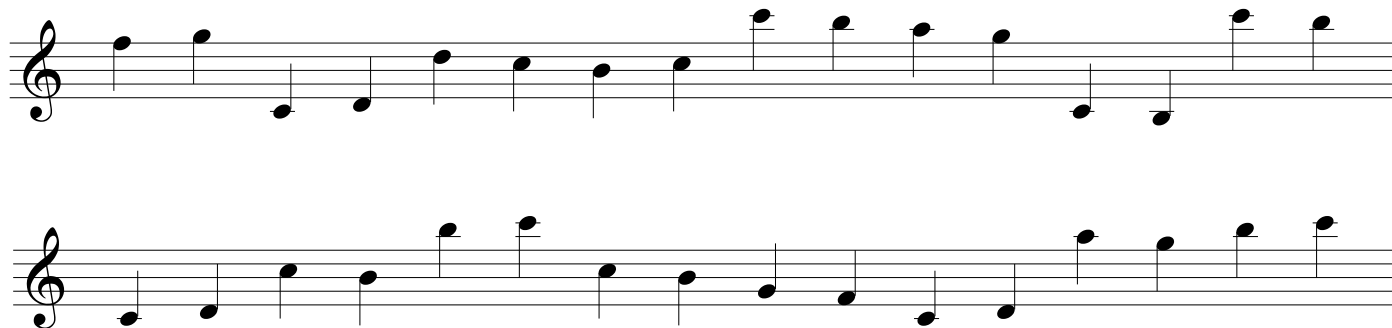
On Friday morning we'll do 10-minute one-on-one appointments instead of class. You'll be asked to do three musical tasks and each one will be graded with a score from 60-100. The average of the three will be your first quiz score.

Note that I usually make a recording of each session so that I can grade them carefully and objectively. This recording will remain private between you and me, and you can have a copy. If you object to this policy just let me know.

During the quiz I'll provide a "clean" copy of this sheet for you to read off of.

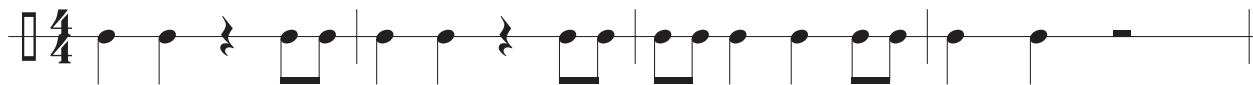
## A. Treble Clef

Let's read two lines from Level Three of our clef exercise, saying the letter names out loud in a steady rhythm. Doesn't have to be super fast, best performance is just calm and accurate.



## B. Rhythm

Let's read one rhythm from the anthology as well. For full credit I would like to see it with conducting, but I'll give you a 92 if you want to execute it without. You may try a no-conducting version first and then add conducting on a subsequent take.



## C. Melody

All right, here I am going to give you a lot of options. Pick ONE tune from the list below. I've transposed the melody into a few different keys for different students. You may sit at the piano, play the melody, and sing along OR you can do it *a cappella*. For full credit I would like it in the solfege language (*do re mi* etc., always moving *do* to be the first note of the scale) but I will take some alternate method for 92 points.

### C Major option (for Erin, Julie?)

Two staves of musical notation in C Major, 4/4 time. The melody consists of quarter notes: C4, D4, E4, F4, G4, A4, B4, C5. The accompaniment consists of quarter notes: C4, C4, D4, E4, F4, G4, A4, B4, C5. The piece ends with a double bar line.

### E♭ Major option (for Max?)

Two staves of musical notation in E♭ Major, 4/4 time. The melody consists of quarter notes: E♭4, F4, G4, A4, B♭4, C5, D5, E♭5. The accompaniment consists of quarter notes: E♭4, E♭4, F4, G4, A4, B♭4, C5, D5, E♭5. The piece ends with a double bar line.

### F Major option (for Maddie?)

Two staves of musical notation in F Major, 4/4 time. The melody consists of quarter notes: F4, G4, A4, B♭4, C5, D5, E5, F5. The accompaniment consists of quarter notes: F4, F4, G4, A4, B♭4, C5, D5, E5, F5. The piece ends with a double bar line.

If you feel a different key suits your voice even better, feel free to work it out. You can ask me for help in making another version.