

Fancy Names and Weird Triads

A. Diminished and Augmented Triads

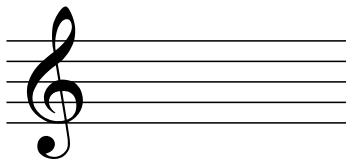
Let's make a few of the weirder triads, the ones that seem either "too big" or "too small." Read pp. 46-47 in the theory anthology for an explanation on how to make them.

1)



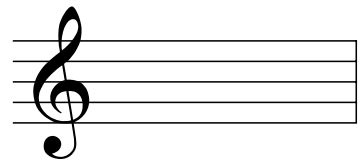
C aug

2)



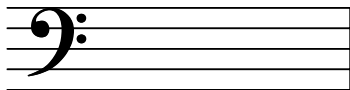
E dim

3)



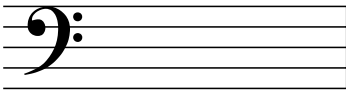
E \flat aug

4)



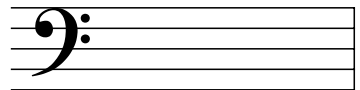
C \sharp dim

5)



D aug

6)



B dim

B. Fancy Note Names

Please read our theory anthology Chapter 12 (pp. 41-42) for info on the fancy note names.

7) What note is the *tonic* in B minor?

8) What note is the *dominant* in E minor?

9) What note is the *subdominant* in D major?

10) What note is the *supertonic* in G major?

11) What note is the *mediant* in F \sharp major?

12) What note is the *submediant* in E \flat major?

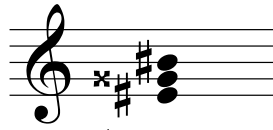
C. Hardcore Major and Minor Triads

Some of these triads require a double flat or double sharp! Make the requested triad on the staff.

Examples:

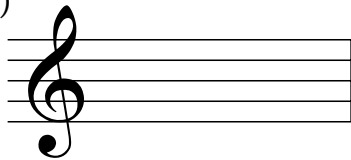


C \flat minor



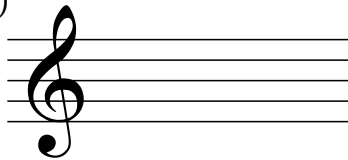
E# major

13)



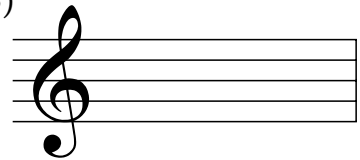
B \flat minor

14)



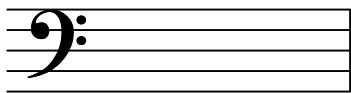
D# major

15)



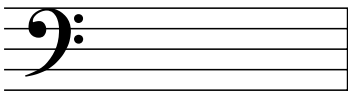
G \flat minor

16)



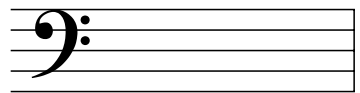
A# major

17)



F# major

18)



D \flat minor