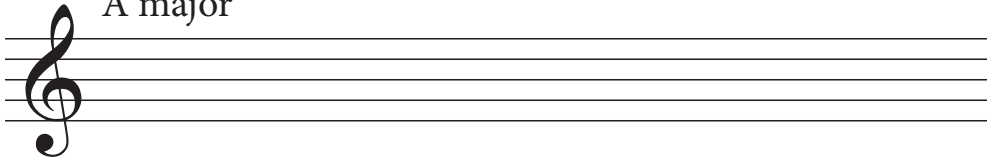


More major scales plus key signatures

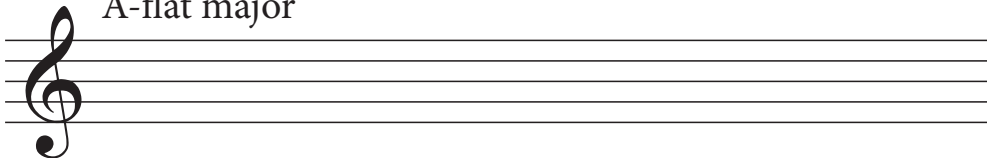
A. More Major Scales

Let's build these scales on some staves with treble clefs. Apply the sharps or flats directly to each note, rather than using a key signature.

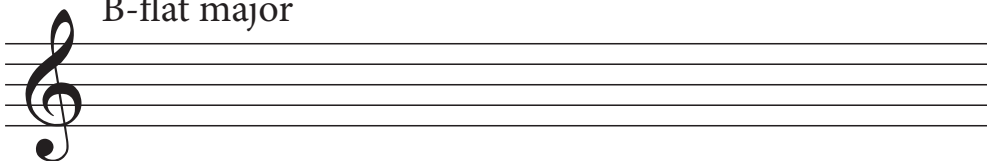
1) A major

A musical staff with a treble clef, five lines, and a box at the end. The label "A major" is positioned above the staff.

2) A-flat major

A musical staff with a treble clef, five lines, and a box at the end. The label "A-flat major" is positioned above the staff.

3) B-flat major

A musical staff with a treble clef, five lines, and a box at the end. The label "B-flat major" is positioned above the staff.

B. Making Key Signatures

Chapter 9 in our theory anthology covers everything you need to know about key sigs. Honestly you can copy most of the answers for this part directly from the text! However, I recommend you do some kind of memory game with it anyway (like write your answer, then doublecheck.)

Pay particular attention to p. 33, which explains how you are supposed to draw key signatures.

4) D major

A musical staff with a treble clef, five lines, and a box at the end. The label "D major" is positioned above the staff.

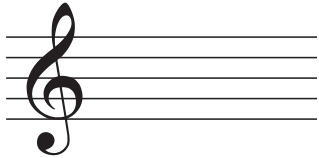
5) A-flat major

A musical staff with a treble clef, five lines, and a box at the end. The label "A-flat major" is positioned above the staff.

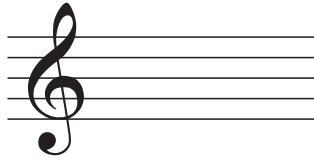
6) F major

A musical staff with a treble clef, five lines, and a box at the end. The label "F major" is positioned above the staff.

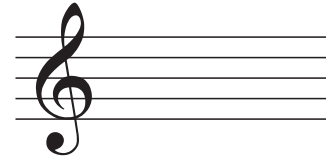
7) G-flat major



8) B major



9) G major



C. ID these major keys by the number of flats or sharps.

10) Which major key has 2 flats? _____

11) Which major key has 4 flats? _____

12) Which major key has 3 sharps? _____

13) Which major key has 7 sharps? _____

14) How many sharps does D major have? _____

15) How many flats does E-flat major have? _____

16) How many sharps does B major have? _____

17) How many flats does F major have? _____